

# What's in the FT Ranking?

Lifen Zhang, Associate Editor, FT  
Editor-in-chief, FTChinese.com  
[lifen.zhang@ft.com](mailto:lifen.zhang@ft.com)

Della Bradshaw, Business Education Editor, FT  
[Della.bradshaw@ft.com](mailto:Della.bradshaw@ft.com)

The Fourth International Business School Shanghai  
Conference

**Oct. 18 2012**



# Financial Time Today





**Warn, encourage - act**  
Martin Wolf says it is time for IMF to take action




**Flash cordon**  
Has technology made share trading too complex?

**John Kay** Brashness and bravado in big deals  
**Ralph Atkins** Europe's 'muddle along' plan is dangerous  
**Bruce Bartlett** How Romney could end QE

[Home](#) [UK](#) [World](#) [Companies](#) [Markets](#) [Global Economy](#) [Lex](#) [Comment](#) [Management](#) [Personal Finance](#)

[Video](#) [Interactive](#) [Blogs](#) [Alphaville](#) [beyondbrics](#) [Portfolio](#) [Special Reports](#) [In depth](#) [Today's Newspaper](#)

Tools 

Highlights • [Tech blog: Apple invites go out](#) • [Short View](#) • [LME Week](#) • [Luke Johnson](#) • [FT earnings diary](#) • [Brussels Notebook: Nobel kerfuffle](#)

## US Presidential Debate


From **WORLD** 8:23am

# Obama recovers poise in Romney clash



## President seeks to make up lost ground

- [Analysis](#) President seeks to win women and Hispanics
- [The World Debate](#) media reaction
- [Edward Luce](#) Presidential wow factor may be just enough
- [As it happened](#) Second US presidential debate

 **EDWARD LUCE** from **COMMENT** 6:02am

## Presidential wow factor may be just enough

*Obama's second debate performance could restore evenness of the race*

- [Global Insight](#) Romney fuels debate over super-Pacs
- [Interactive](#) Campaign trail by numbers

From **COMPANIES** 9:00am

## RBS sets date for insurance scheme exit

Bank has paid government £2.5bn to cover potential losses

- [RBS set to leave toxic asset scheme](#)
- [Setback for RBS on road to rehabilitation](#)
- [Santander pulls plug on RBS deal](#)
- [In depth](#) **UK banks**

### MARKETS DATA

[Indices](#) [Commodities](#) [Currencies](#) [Bonds](#)

FTSE 100	5,877.92	+0.13%
S&P 500	1,454.92	+1.03%
Eurofirst 300	1,113.76	+0.06%
Nikkei 225	8,806.55	+1.21%
Shanghai	2,105.62	+0.32%

Data delayed by at least 15 minutes

[Portfolio](#) [Markets Data](#)

**Businessweek**  
.com

See 





**中国消费者减少消费和送礼**  
贝恩咨询表示，今年奢侈品市场增长会减缓



**电影中的莫言**  
金娜：莫言做过编剧，这被他用“痛苦”做总结

FT中文网商学院 成就未来商业领袖  
FT中文网iPad App 洞悉全球财经精粹

会员信息



### 中美两国能否友好相处？

FT专栏作家斯蒂芬斯：中美领导人的换届时点提醒人们，中美关系将给未来数十年的国际秩序带来深远影响。中美两国能否友好相处，将决定我们要面对的是战争还是和平。

- 中共宣布“十八大”会期
- 习近平重新出席公开活动

### 观点 · 专栏

#### 专栏 > 《媒体札记》

#### 媒体札记：泥瓦匠的儿子 **新**



FT中文网专栏作家徐达内：针对上月反日游行中的暴力，媒体责问“谁怂恿了泥瓦工蔡洋的暴力表达”。恰巧韩德强也是泥瓦匠之子，他转发了“南方系”对他的访谈。

#### 金融市场 > 股市

#### A股再陷“三无”格局 **新**



FT中文网投资与财富管理编辑冯涛：周四即将公布的9月份经济数据，对投资者情绪形成一定干扰。《股市场再度陷》于热点

### 视频与互动



日韩领土纠纷：“独岛”还是“竹岛”？



黄怒波：离开官场从未后悔

### 新闻 · 分析

#### 日本所持美债总量逼近中国 **新**

日本正提高增持美元速度，而中国经济放缓导致对美国国债需求减弱

- 新一轮楼市繁荣将提振美国经济
- 美抵押贷款市场“被几家银行主宰”

#### 岛屿之争考验中国大国角色



中国频繁派遣海监船进入争议岛屿水域，此举展现了中方对日本国有化岛屿的愤怒，也加剧了邻国的担心和疑虑。

- 前原诚司：日本无意在领土主权上退让

#### 刷卡记录成为营销利器 **新**

私人银行服务 Private Banking Service

丰沃人生

康泽生 敬启

全国20个城市 2012年5月-2012年12月

# Financial Times Executive MBA ranking 2012

2012	2011	2010	Three-year average	School name	Country	Programme name
1	1	1	1	Kellogg/Hong Kong UST Business School	China	Kellogg/HKUST EMBA
2	3	2	2	Columbia/London Business School	US/UK	EMBA-Global Americas and Europe
3	2	3	3	Trium: HEC Paris/LSE/New York University: Stern	France/UK/US	Trium Global EMBA
4				Tsinghua University/Insead	China/Singapore	Tsinghua-INSEAD EMBA
5	9			UCLA: Anderson/National University of Singapore	US/Singapore	UCLA-NUS EMBA
6	4	4	5	Insead	France/Singapore	Insead Global EMBA
7	11	18	12	Ceibs	China	Global EMBA
8	7	8	8	University of Pennsylvania: Wharton	US	Wharton MBA for Executives
9	15	18	14	Washington University: Olin	US/China	Olin-Fudan EMBA
10	5	5	7	University of Chicago: Booth	US/UK/Singapore	EMBA
11				Sun Yat-Sen Business School	China	SYSBS EMBA
12	8	7	9	IE Business School	Spain	EMBA
12	23			Korea University Business School	South Korea	EMBA
14	13	26	18	Iese Business School	Spain	GEMBA
15	10	6	10	London Business School	UK/Dubai	EMBA
16	6	9	10	Duke University: Fuqua	US	Duke MBA - Global Executive
17	14	10	14	CUIHK Business School	China	EMBA
18	17	14	16	Kellogg/WHU Beisheim	Germany	Kellogg-WHU EMBA
19				Georgetown University/Esade Business School	US/Dubai/Spain	GEMBA
20	16	12	16	IMD	Switzerland	IMD EMBA
21	31	15	22	ESCP Europe	France/UK/Germany/Spain/Italy	European EMBA
21	20	28	23	Arizona State University: Carey	China	Carey/SNAI EMBA
23	17	20	20	Northwestern University: Kellogg	US	Kellogg EMBA
24	26	22	24	OneMBA: CUIHK/RSM/UNC/FGV São Paulo/Egside	China/Netherlands/US/Brazil/Mexico	OneMBA
24	34	35	31	Warwick Business School	UK	Warwick EMBA
26	19	27	24	National University of Singapore Business School	Singapore	Asia-Pacific EMBA
27	11	23	20	Kellogg/York University: Schulich	Canada	Kellogg-Schulich EMBA
27				University of Southern California: Marshall	China	USC-SJTU GEMBA
29	28	29	29	University of Toronto: Rotman	Canada	Rotman One-Year EMBA
30	21	17	23	New York University: Stern	US	NYU Stern EMBA
31	23	34	29	Imperial College Business School	UK	EMBA
32	29	10	24	City University: Cass	UK/Dubai	EMBA
32	25	15	24	Columbia Business School	US	EMBA
34	32	31	32	University of Michigan: Ross	US	EMBA
35	26	24	28	Cornell University: Johnson	US	Cornell EMBA
35	35	46	39	Georgetown University: McDonough	US	EMBA
35				Fudan University School of Management	China	Fudan EMBA
38	29	32	33	University of Oxford: Saïd	UK	EMBA
39	37	38	38	UCLA: Anderson	US	EMBA
40				ESMT - European School of Management and Technology	Germany	EMBA
41	33	32	35	Essec/Mannheim	France/Germany	Essec & Mannheim EMBA
41	39	24	35	Rotterdam School of Management, Erasmus University	Netherlands	EMBA
43	36	29	36	University of Western Ontario: Ivey	Canada/China	Ivey EMBA
44				University of California at Irvine: Merage	US	EMBA
45	44	55	48	Cornell University: Johnson/Queen's School of Business	US/Canada	Cornell-Queen's EMBA
46	40	41	42	Rice University: Jones	US	Rice MBA for Executives
46		81		Kozminski University	Poland	EMBA
48	61	84	64	Euromed Management	France/China	Euromed MBA Part Time
49	41	41	44	Emory University: Goizueta	US	Weekend EMBA
50				Antwerp Management School	Belgium	EMBA



# Financial Times Executive MBA ranking 2012

2012	2011	2010	Three-year average	School name	Country	Programme name
51=	48	36	45	University of Maryland: Smith	US	Smith EMBA
51=	38			WU (Vienna University of Economics and Business)/ University of Minnesota: Carlson	Austria	EMBA (Global)
53	50			Henley Business School	UK	Henley EMBA
54=	45	52	50	University of Texas at Austin: McCombs	US	Texas EMBA
54=				University of Hong Kong/Fudan University School of Management	China	HKU-Fudan IMBA
56=	78	59	64	University of St Gallen	Switzerland	EMBA HSG
56=	80	73	70	Ohio State University: Fisher	US	Fisher EMBA
58	54	62	58	Texas A&M University: Mays	US	Texas A&M EMBA
59	49	72	60	Vanderbilt University: Owen	US	Vanderbilt EMBA
60=		68		EMLYon Business School	France	EMBA
60=	67			University of Pretoria: Gibs	South Africa	Modular and Part-time MBA
62	41	44	49	University of Pittsburgh: Katz	US/Brazil/Czech Republic	EMBA Worldwide
63=	52	43	53	Temple University: Fox	US	Fox EMBA
63=	64	78	68	Georgia State University: Robinson	US	EMBA
63=				University of Illinois at Urbana-Champaign	US	EMBA at Illinois
66=	45	37	49	National Taiwan University College of Management	Taiwan	NTU EMBA
66=	76	64	69	University of Texas at Dallas: Jindal	US	EMBA
66=		40		Boston University School of Management	US	Boston University EMBA
66=	67			SDA Bocconi	Italy	EMBA
70=	57	71	66	Yonsei University School of Business	South Korea	Corporate MBA
70=	70	73	71	Rutgers Business School	US	Rutgers EMBA
70=	83	84	79	University of Washington: Foster	US	Foster EMBA
73=	51	75	66	Villanova School of Business	US	Villanova EMBA
73=	67			Fordham University Graduate School of Business	US	EMBA
75=	47	44	55	Cranfield School of Management	UK	EMBA
76	94	81	84	University of Miami School of Business Administration	US	University of Miami EMBA
77				Centrum Católica	Peru/Colombia	Global MBA
78	72	57	69	Koç University Graduate School of Business	Turkey	EMBA
79	70	78	76	SMU: Cox	US	SMU Cox EMBA
80=	74	75	76	Tulane University: Freeman	US	EMBA
80=		67		University of Minnesota: Carlson	US	Carlson EMBA
80=	90			University of Rochester: Simon	US/Switzerland	EMBA
83=	53	62	66	Aalto University	Finland/S Korea/Singapore	Aalto University EMBA
83=	93	55	77	Thunderbird School of Global Management	US	EMBA
85	57	66	69	Fundação Instituto de Administração	Brazil	International EMBA
86=	56	39	60	Tongji University/ENPC	China	Shanghai International MBA (SIMBA)
86=				Tilburg University: TiasNimbas	Netherlands	EMBA
88=	57	54	66	University College Dublin: Smurfit	Ireland	EMBA
88=	60			Georgia Institute of Technology: Scheller	US	EMBA
90	81	61	77	Vlerick Business School	Belgium	EMBA
91	62	51	68	University at Buffalo, The State University of New York	US	EMBA
92=	76	47	72	Copenhagen Business School	Denmark	EMBA
92=	84	69	82	Queen's School of Business	Canada	Queen's EMBA
94	62	64	73	Ashridge	UK	EMBA
95	75	60	77	University of Georgia: Terry	US	Terry EMBA
96=	89	91	92	Baylor University: Hankamer	US	Baylor University EMBA
96=	99	95	97	University of Denver: Daniels	US	Daniels EMBA
96=				HEC Lausanne	Switzerland	EMBA in Management & Corporate Finance
99	73	48	73	University of Alberta/University of Calgary: Haskayne	Canada	Alberta/Haskayne EMBA
100				University of Zurich	Switzerland	Zurich EMBA

# FT EXECUTIVE MBA 2012

## The top 25 programmes

### → FT EXECUTIVE MBA 2012

#### The top 25 programmes

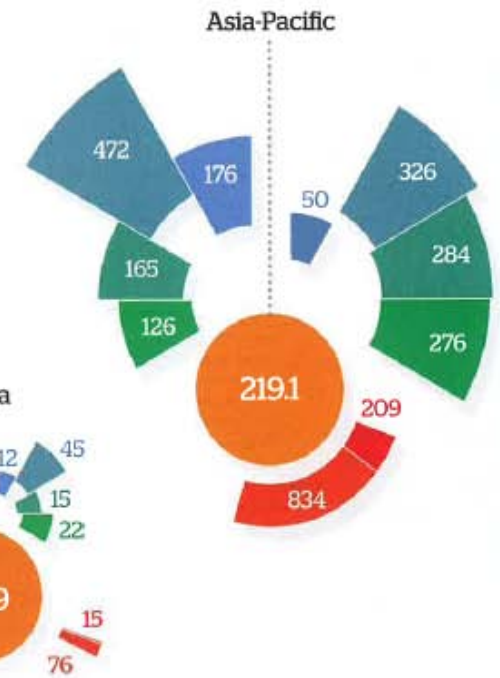
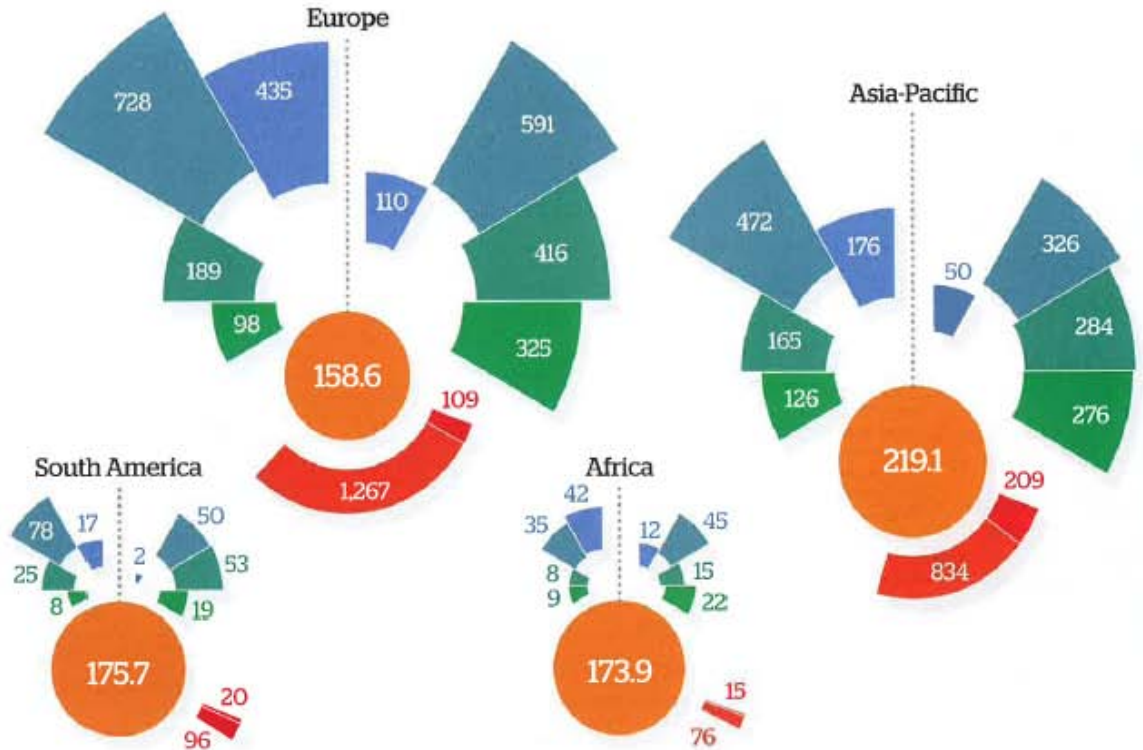
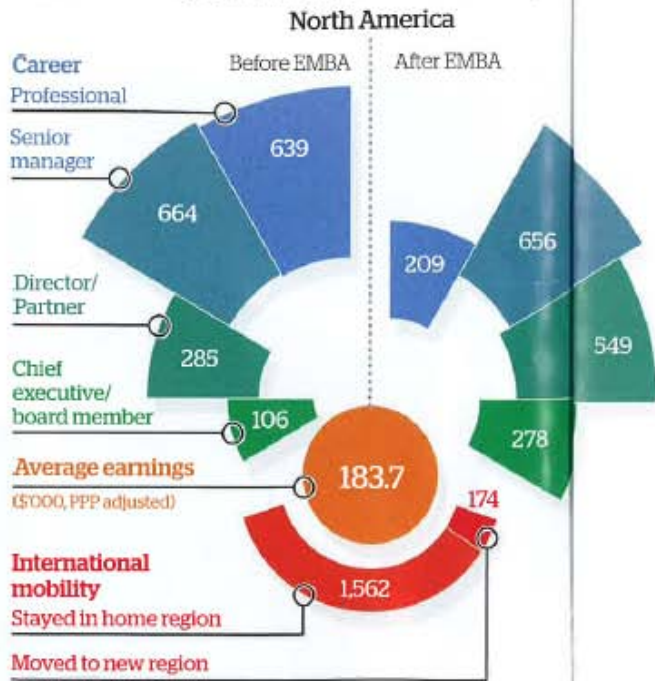
Rank	School name	Salary today (US\$)
1	Kellogg/Hong Kong UST Business School	465,774
2	Columbia/London Business School	265,596
3	Trium: HEC Paris/LSE/New York University: Stern	307,992
4	Tsinghua University/Insead	287,630
5	UCLA: Anderson/National University of Singapore	250,940
6	Insead	212,586
7	Ceibs	274,546
8	University of Pennsylvania: Wharton	229,086
9	Washington University: Olin	255,945
10	University of Chicago: Booth	230,855
11	Sun Yat-Sen Business School	280,374
12=	IE Business School	186,324
12=	Korea University Business School	268,324
14	Iese Business School	215,027
15	London Business School	180,070
16	Duke University: Fuqua	250,913
17	CUHK Business School	309,340
18	Kellogg/WHU Beisheim	173,684
19	Georgetown University/Esade Business School	247,110
20	IMD	221,809
21=	ESCP Europe	153,168
21=	Arizona State University: Carey	237,672
23	Northwestern University: Kellogg	239,134
24=	OneMBA: CUHK/RSM/UNC/FGV São Paulo/Egade	184,612
24=	Warwick Business School	149,331



# Career progress of EMBA alumni

## Career progress of EMBA alumni

Class of 2009 by citizenship (ranked schools)\*



### Experience\*\*

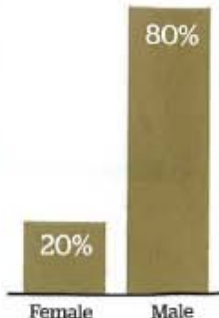
Number of jobs before EMBA

3

Number of countries worked in before EMBA

2

### Gender\*\*



### Age\*\*

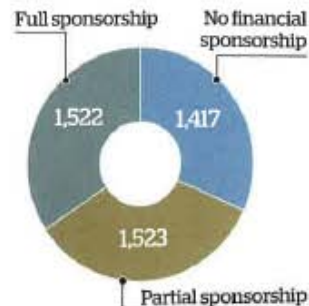
Age when starting EMBA

36

Age now

41

### Financial assistance



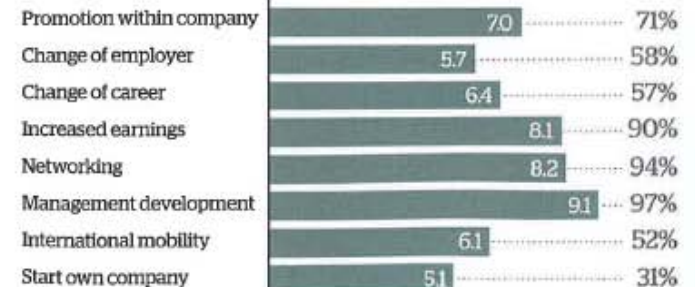
### Motivation\*\* ...

(score out of 10)

- Promotion within company
- Change of employer
- Change of career
- Increased earnings
- Networking
- Management development
- International mobility
- Start own company

### ... and achievements\*\*

(% of aim achieved)



Source: FT research

\*Number of respondents to FT alumni survey \*\* Average

# Trends

- ➔ **Going global: 6 cross-continental joint programmes topping the table in this year's ranking.**
- ➔ **Of 139 EMBA programs surveyed, 16 are taught jointly by more than one school**
- ➔ **Asia is rising: 9 out of the top 12 programmes taught at least partly in Asia.**
- ➔ **China is setting the pace in executive MBAs. The EMBA is to China what the MBA is to the US.**
- ➔ **Newcomers are coming fast: 18 of the programmes ranked in 2012 didn't feature in 2011**

# Whether MBA or EMBA worth it?

**\$171,360**  
WHARTON V 4LB MOON ROCK  
The Wharton EMBA fee could get you this lunar meteorite at auction this month - bidding starts at \$170,000

**\$166,500**  
KELLOGG V ISLAND IN CANADA  
An admittedly radical alternative to a Kellogg EMBA might be an undeveloped Canadian island, for upwards of \$100,000

**\$90,000**  
TSINGHUA/INSEAD V CRYOGENICS  
What price immortality (maybe)? \$90,000 will get you cryogenically frozen - or an EMBA in Beijing and Singapore

**\$85,000**  
OXFORD SAID V 1964 JAGUAR XK120  
Inspector Morse's Jag forever linked the marque to Oxford but this coupé on sale in the US is a far sleeker beast

**\$51,000**  
WARWICK V DINNER WITH MITT ROMNEY (BELOW)  
\$50,000 will buy you a seat at the Republican's fundraising dinner  
- Charlotte Clarke

PHOTOS: GETTY; DREAMTIME; REUTERS

Even with the benefit of hindsight, 93 per cent of EMBA alumni would have chosen the same programme again, according to a recent FT poll



- Even with the benefit of hindsight, 93 per cent of the EMBA alumni would have chosen the same programme again, according to a recent FT poll.



# Behind the Methodology

- 1 This year, a total 5992 alumni responses were received by the FT, 59 per cent of those surveyed; For programmes to be included in the ranking, a 20 percent response rate is required among alumni surveyed.**
- 2 Salary data are collected independently from alumni;**
- 3 One quarter of the surveyed MBA or EMBA programmes are independently audited.**

## What is Newslines?

### An easy way to integrate FT news into the classroom

- Comment on FT articles and share academic notes with your class and a global community of students and business schools
- Bring subjects to life with up-to-date news and information, connecting current events with course principles
- Equip students with the international experience and awareness needed to implement global strategy and work in cross-cultural environments

#### Explain

Add notes on FT articles to provide background or explanations of key points to help your class understand the implications of news stories.

#### Inform

Receive email alerts from the FT's editorial team with a list of the top five featured articles of the day.

#### Share

Make your comments available to private groups within your school or to a global community of professors and MBA students.

#### Debate

Develop discussion points for your class by annotating relevant articles and asking for comments from your students.

Newslines is available exclusively as part of an FT education licence. For more information on how to subscribe and to request a trial of Newslines please visit

[www.education.ft.com/free-trial](http://www.education.ft.com/free-trial)

#### SEARCH

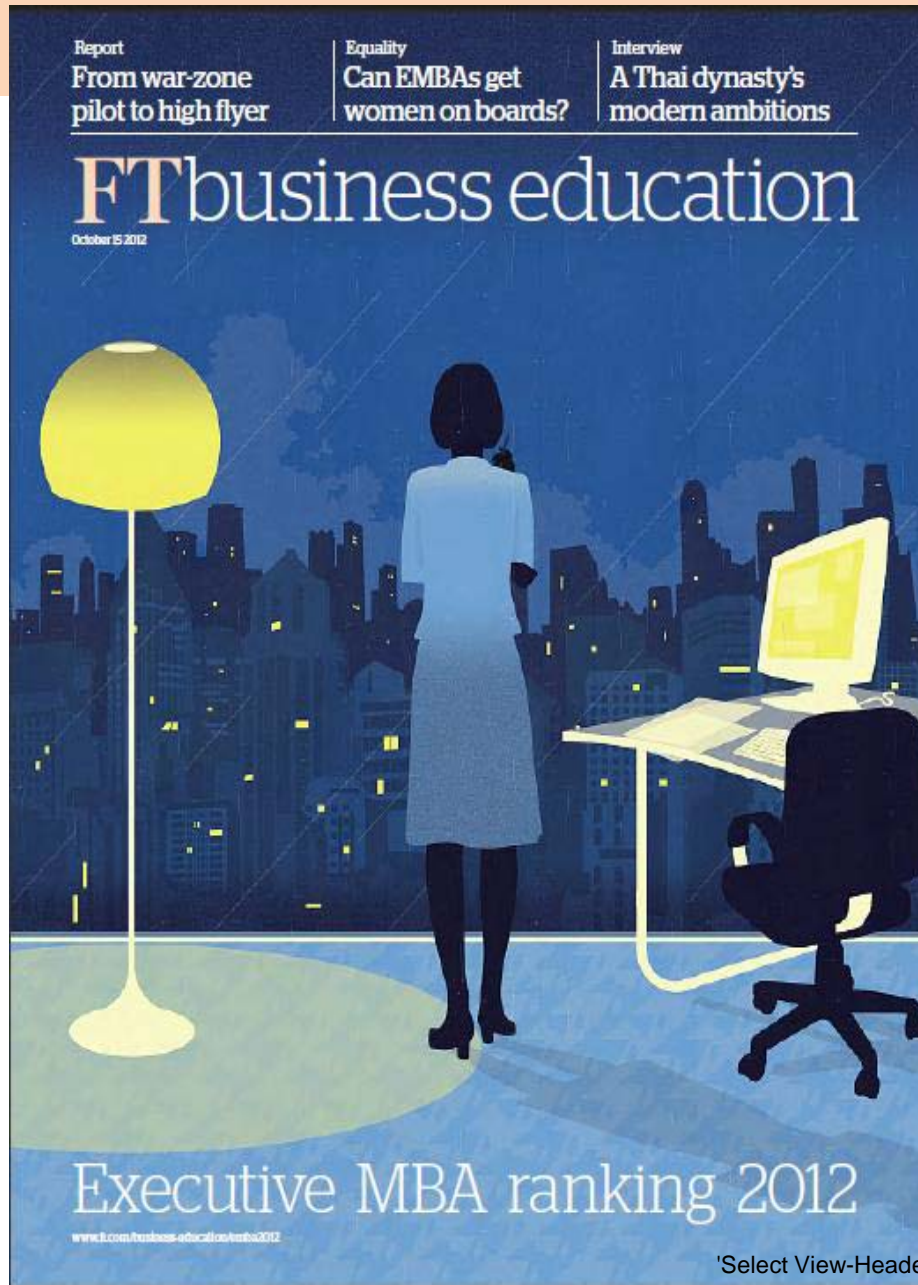
Find annotatable articles by title, tags, or annotator

#### POPULAR TAGS

[Colour coding?](#)

<b>IMF</b> x 17	<b>Financial markets</b> x 7
<b>Austerity</b> x 12	<b>Central banks</b> x 14
<b>Eurozone crisis</b> x 136	<b>Leadership</b> x 25
<b>Macroeconomics</b> x 26	<b>Strategy</b> x 56
<b>Mergers &amp; acquisitions</b> x 113	<b>Monetary policy</b> x 10
<b>Greece</b> x 35	<b>Management</b> x 22
<b>Energy</b> x 12	<b>Currencies</b> x 15
<b>Sovereign debt</b> x 13	<b>Barclays</b> x 7
<b>EADS</b> x 4	<b>Marketing</b> x 8
<b>British Aerospace Engineering</b> x 4	

[View all popular tags](#)





未来工厂 金融时代 FT精选集



未来工厂



工业时代



大国制造



创新与设计



制造业精选集



商业创新精选集



**SHIP OF STATE**

贝卢斯科尼主政期间，意大利经济停滞，竞争力下降，腐败猖獗。他的性丑闻令整个意大利蒙羞，他在火烧眉毛的时候仍然只顾小事不顾大局，FT社评甚至将他比作古罗马的昏君尼禄。



## 视频：用3D打印未来



3D打印究竟是怎样生产个性化的、造型复杂的部件的呢？为什么说这一技术有望改变诸多制造业的格局？现在已经有可以制造小物件的家用3D打印机上市了，它的使用成本如何？

FT制造业编辑彼得·马什，和3D Systems公司首席执行官阿贝·莱肯塔尔，为你一探究竟。



# Observations on Business education in China

*Oct.18 2012*

**World business.**

In one place.

*We live in FINANCIAL TIMES*

*Thank you*

*www.FTChinese.com*

